

7/6/25

# CITY Watching

---

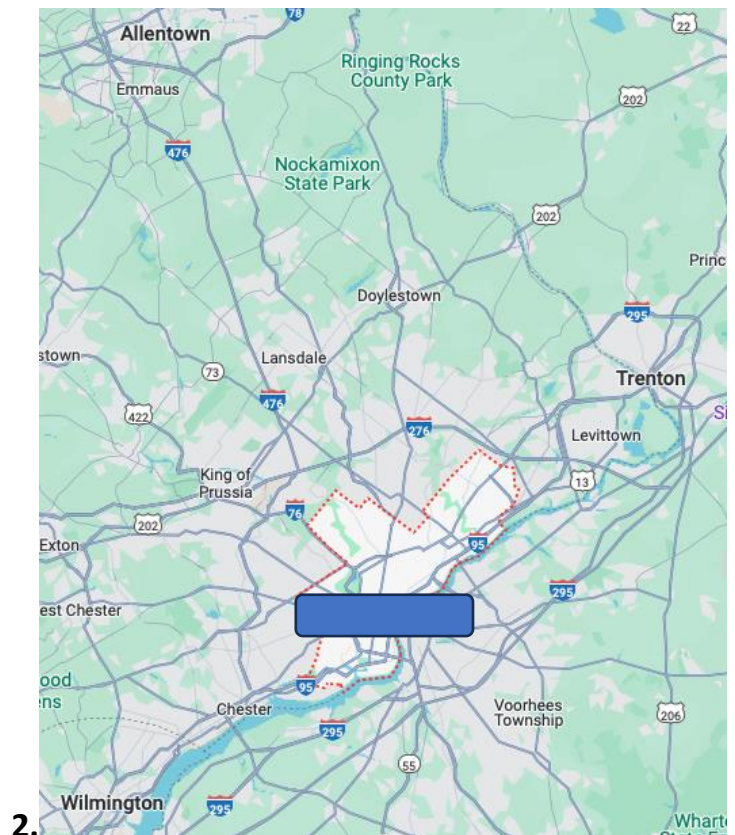
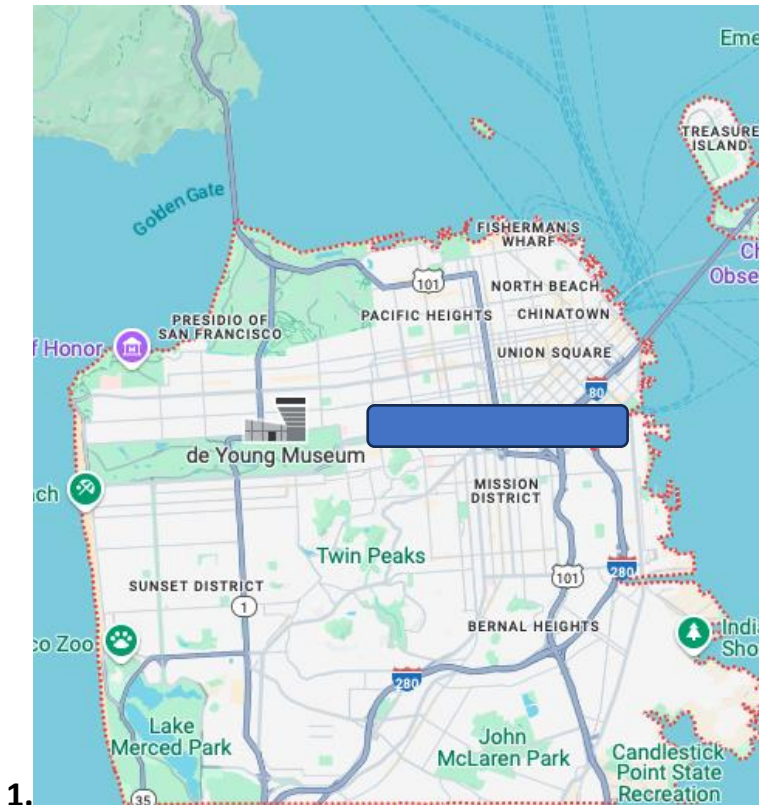
Estimated play time: Approximately 15 minutes  
Number of players: Unlimited  
Supplies needed: Scoring board/pad; noisemakers  
Suitable for visually impaired players.

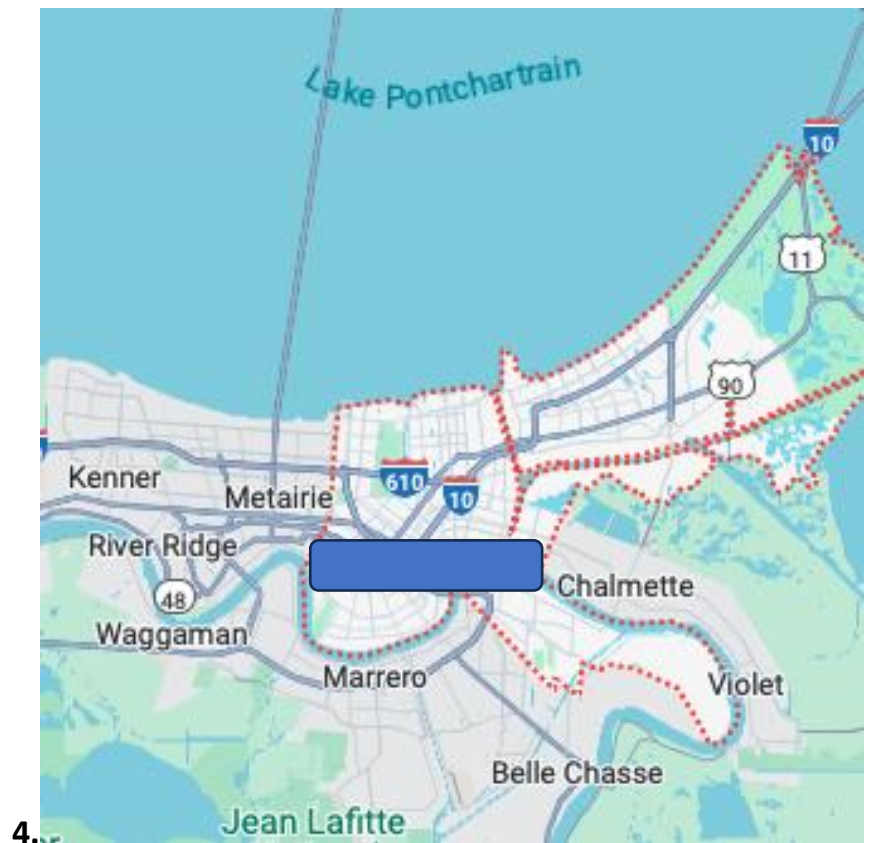
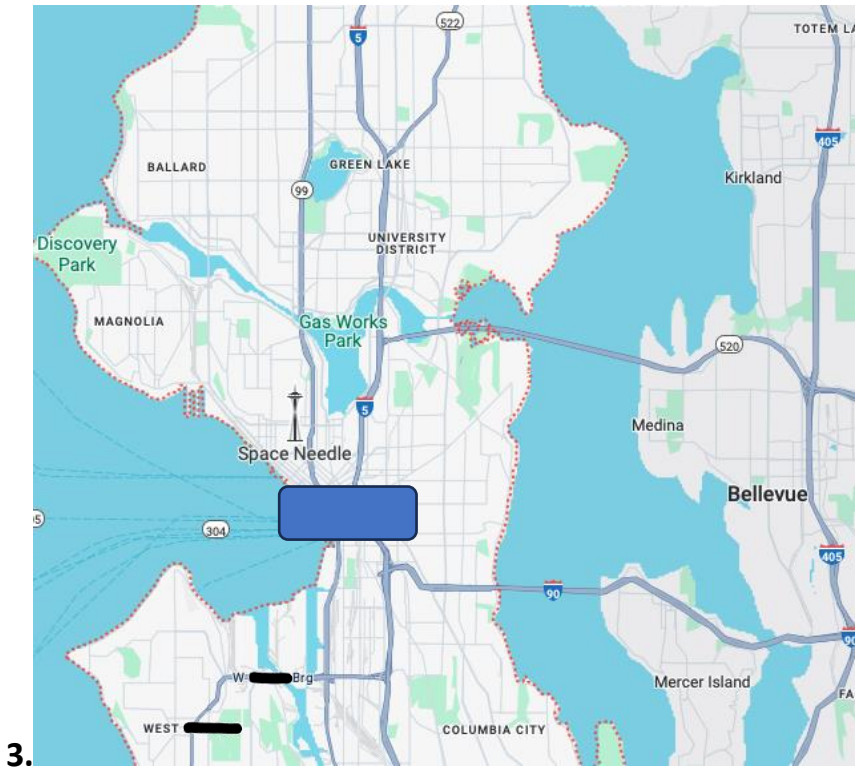
## Overview:

You don't have to leave your home to see the USA; all you need to do is to identify each metropolitan area by the portion of the map we've provided. *(Note: The blue block(s) or thick black lines on each map are hiding the name of the city we're looking for – we didn't want to make it too easy for you!)*

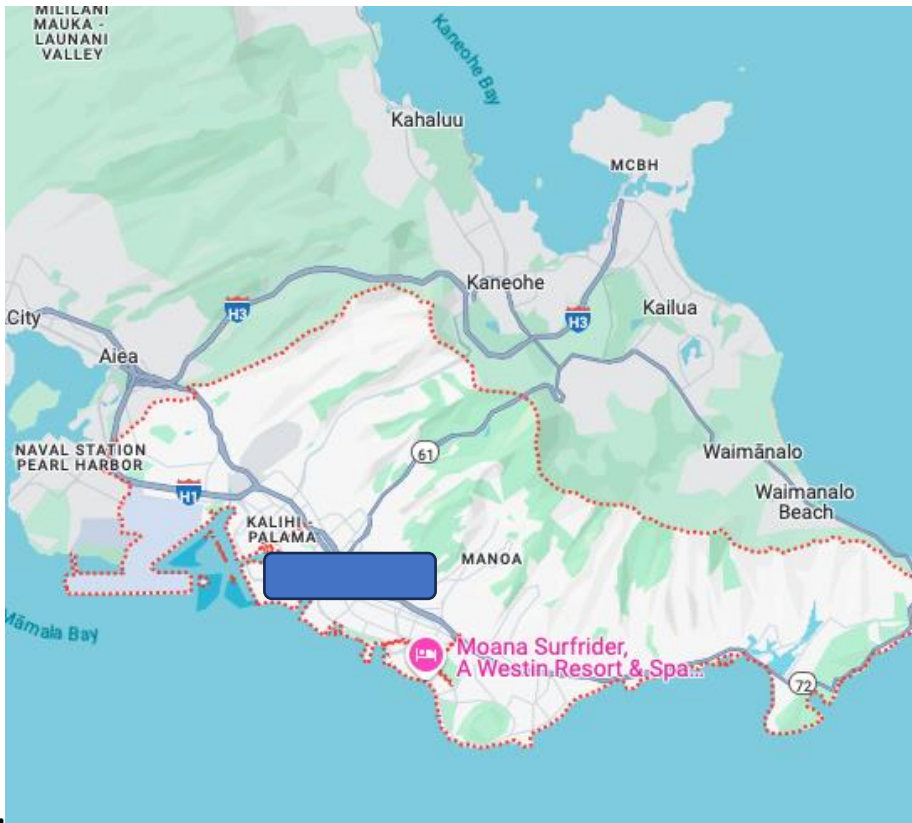
## Instructions:

1. This game can be played by individuals or in teams.
2. Show the first image. Discussion is permitted among teammates. Prior to the start of the game, a method to signal when a player/team is ready to answer must be determined. Ringing bells and New Year's blowers are just two inexpensive noisemakers. Raised hands work, but the host must be vigilant to watch for whose hand went up first. The host always has the final say in any disputes.
3. After a player/team is recognized as the first to signal, they may give an answer. If the first answer is incorrect, the others may 'buzz' in and answer.
4. Keep score (10 points for each answer) after each question is answered correctly. Play until all questions have been asked and answered.

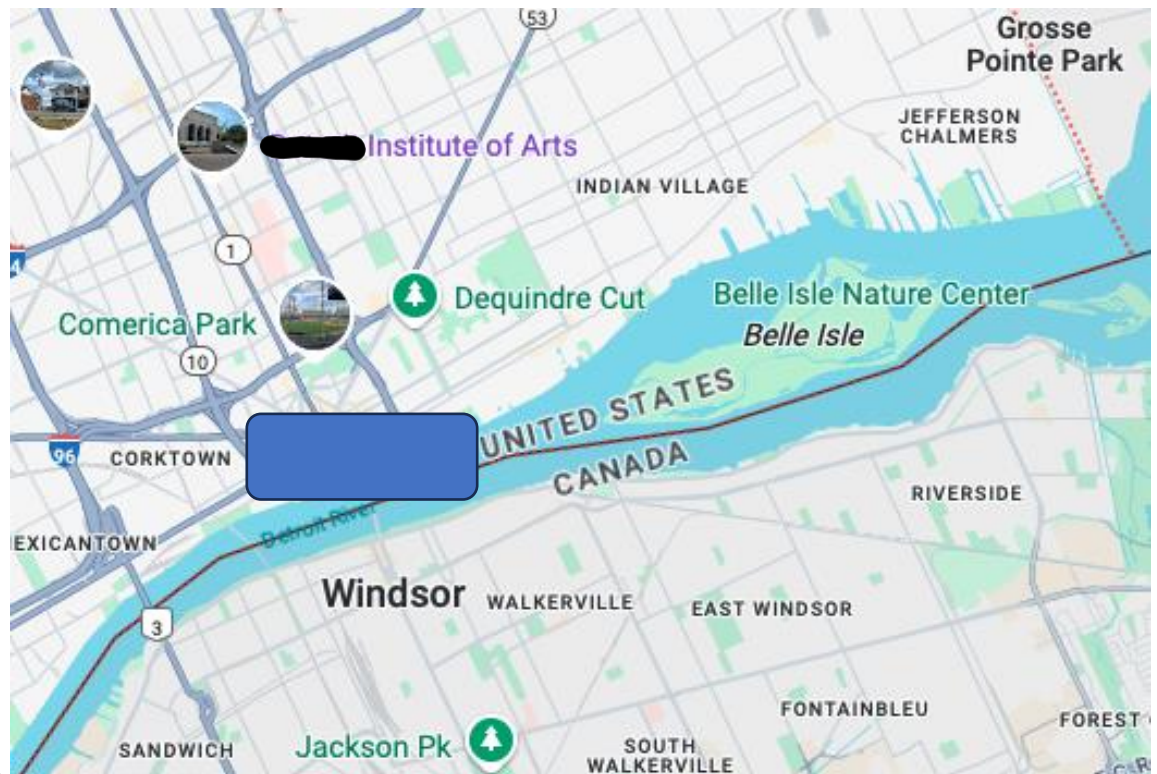




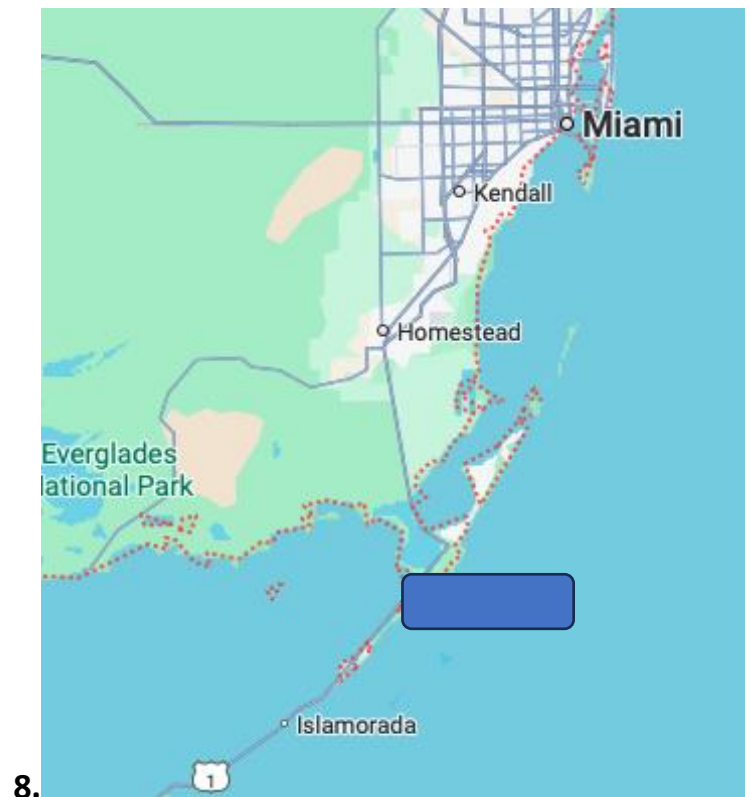
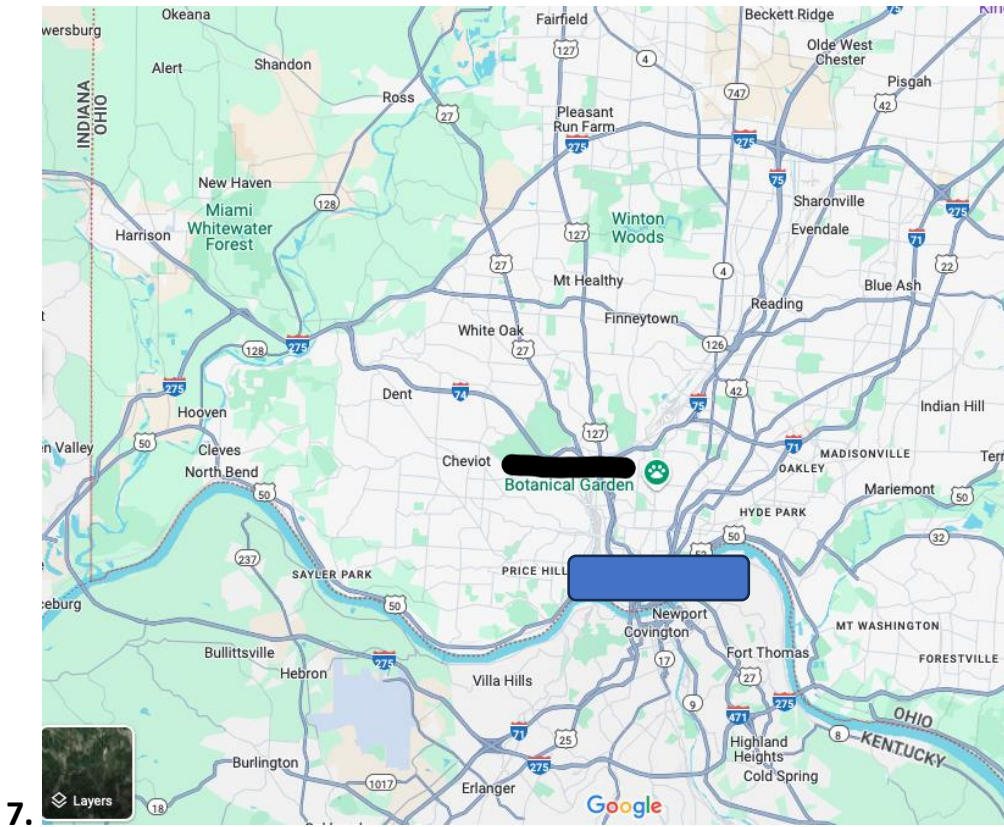




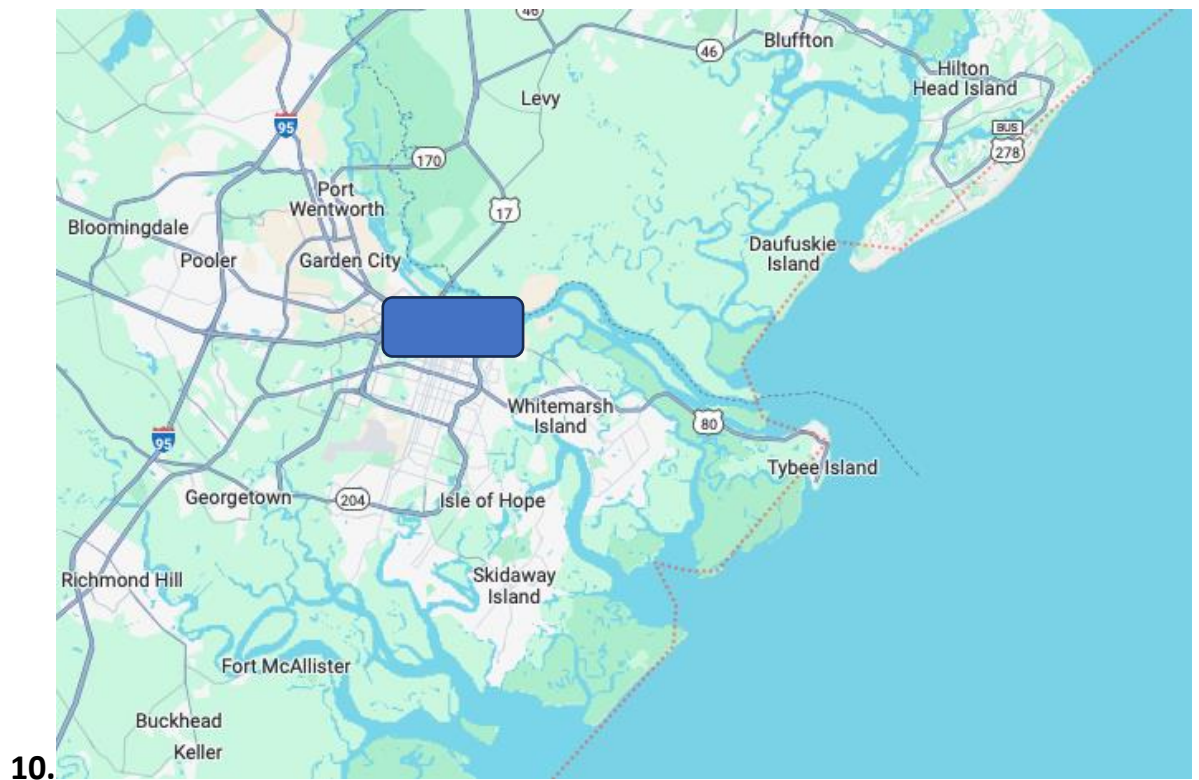
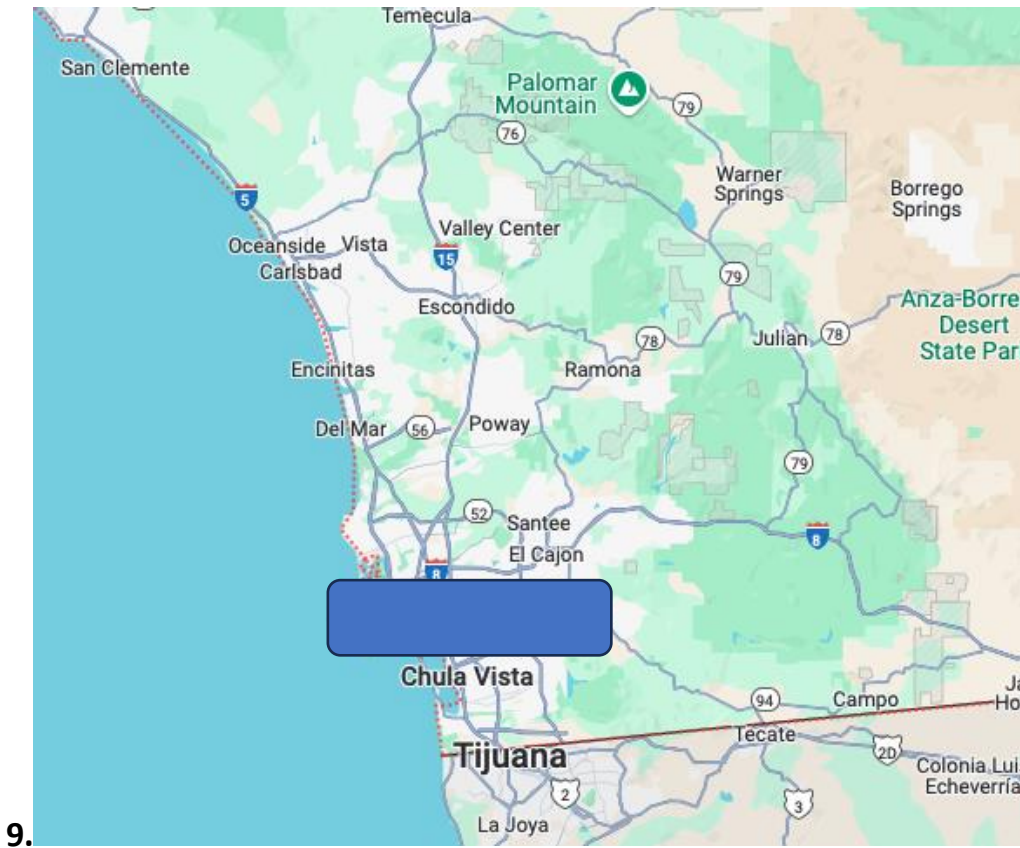
5.

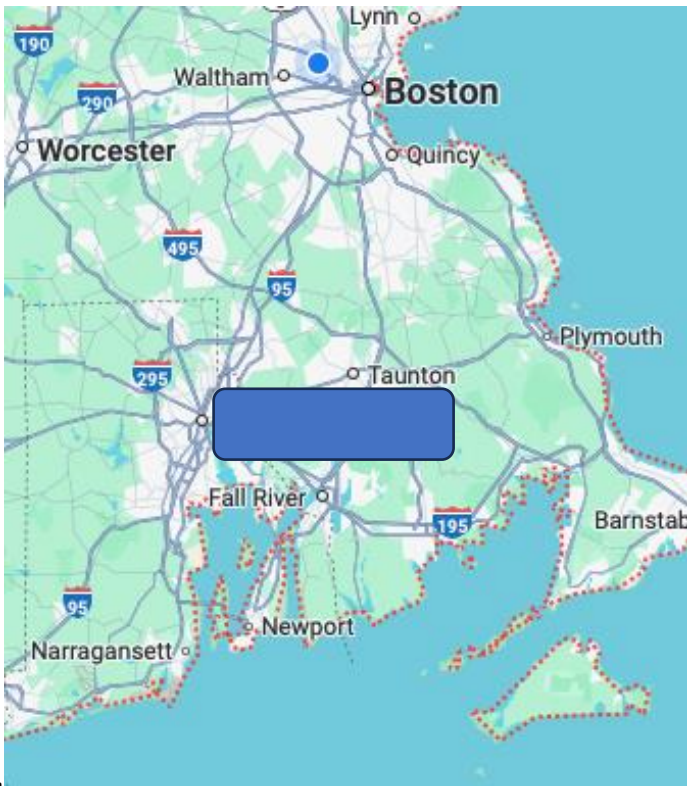


6.

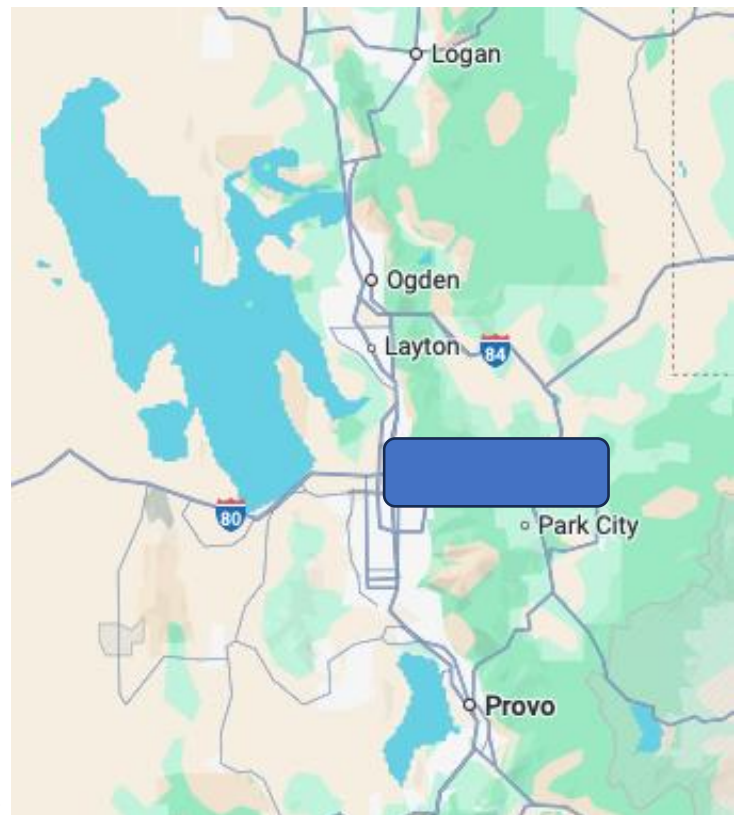








11.



12.

7/6/25

# CITY Watching

---

## ANSWERS

1. San Francisco, CA
2. Philadelphia, PA
3. Seattle, WA
4. New Orleans, LA
5. Honolulu, HI
6. Detroit, MI
7. Cincinnati, OH
8. Key Largo, FL
9. San Diego, CA
10. Savannah, GA
11. Providence, RI
12. Salt Lake City, UT